

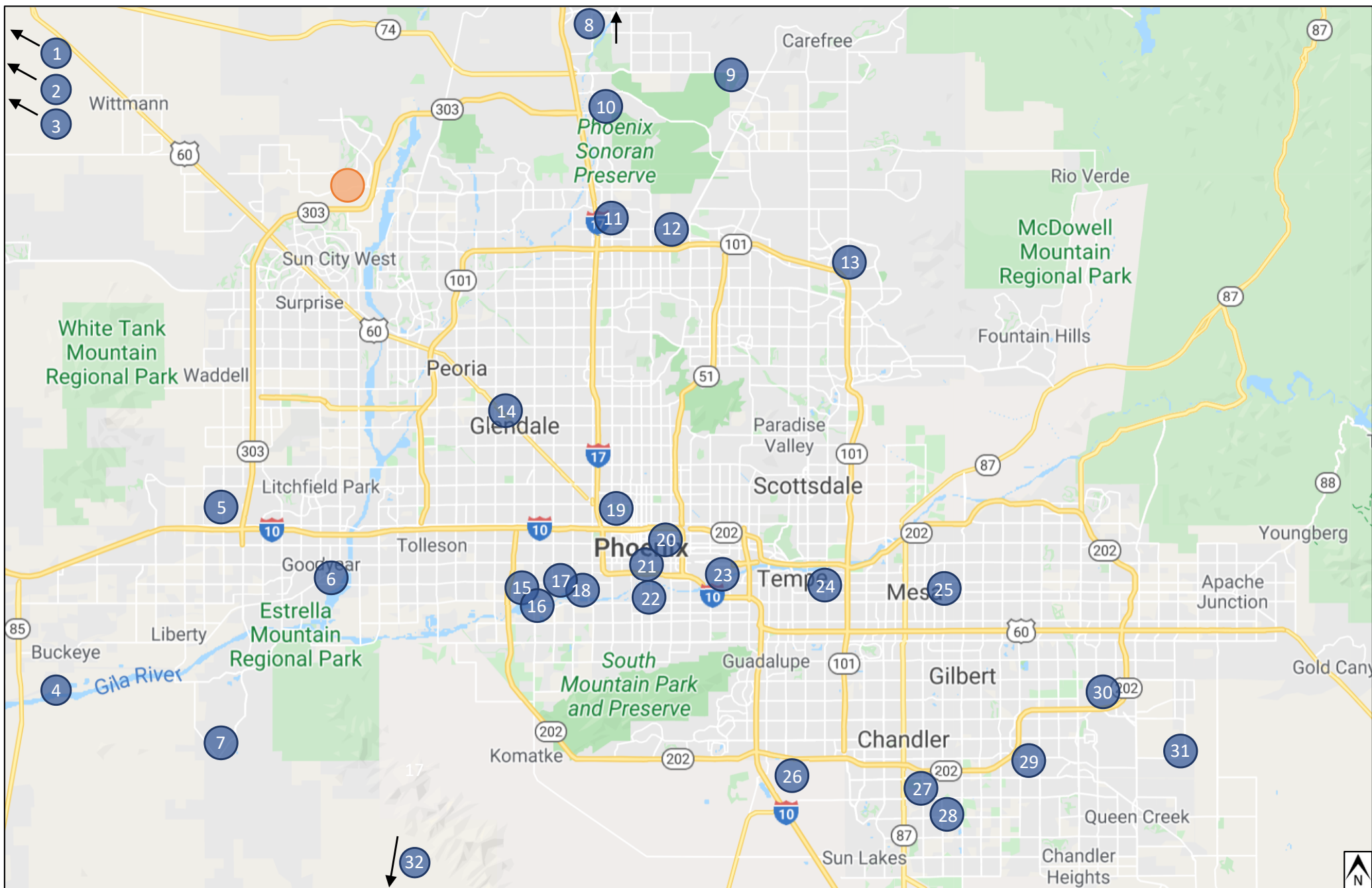
Exhibit 1

List of all ADEQ-Registered Transfer Stations in Maricopa County

Exhibit 2

Map of all ADEQ-registered transfer stations in Maricopa County

Map of All ADEQ-Registered Transfer Stations within Maricopa County



● Comparable Facility

● Proposed WestWing Transfer Facility

Exhibit 3

**List of Commercial Scale Recycling and
Transfer Stations in Maricopa County**

List of Commercial Scale Recycling and Transfer Stations in Maricopa County

#	Transfer Station	Operator	Distance to Nearest Residence	Approx. Acreage	Building Square Footage	Approx. Number of Bays	BOS District
1	North Gateway	City of Phoenix	350 feet	40	216,000	14	3
2	Deer Valley	Waste Management	4,140 feet	7	20,950	1	3
3	Cave Creek Hauling	Republic Services	1,653 feet	12	21,400	6	3
4	City of Scottsdale	City of Scottsdale	2,750 feet	8.6	13,800	7	2
5	San Tan Hauling	Waste Management	1.1 miles	22	32,500	1	2
6	Mesa	Republic Services	2,310 feet	9	20,470	1	2
7	Germann	Republic Services	3,220 feet	10	23,690	7	1
8	Sky Harbor Regional	Waste Management	1.6 miles	13	44,000	7	5

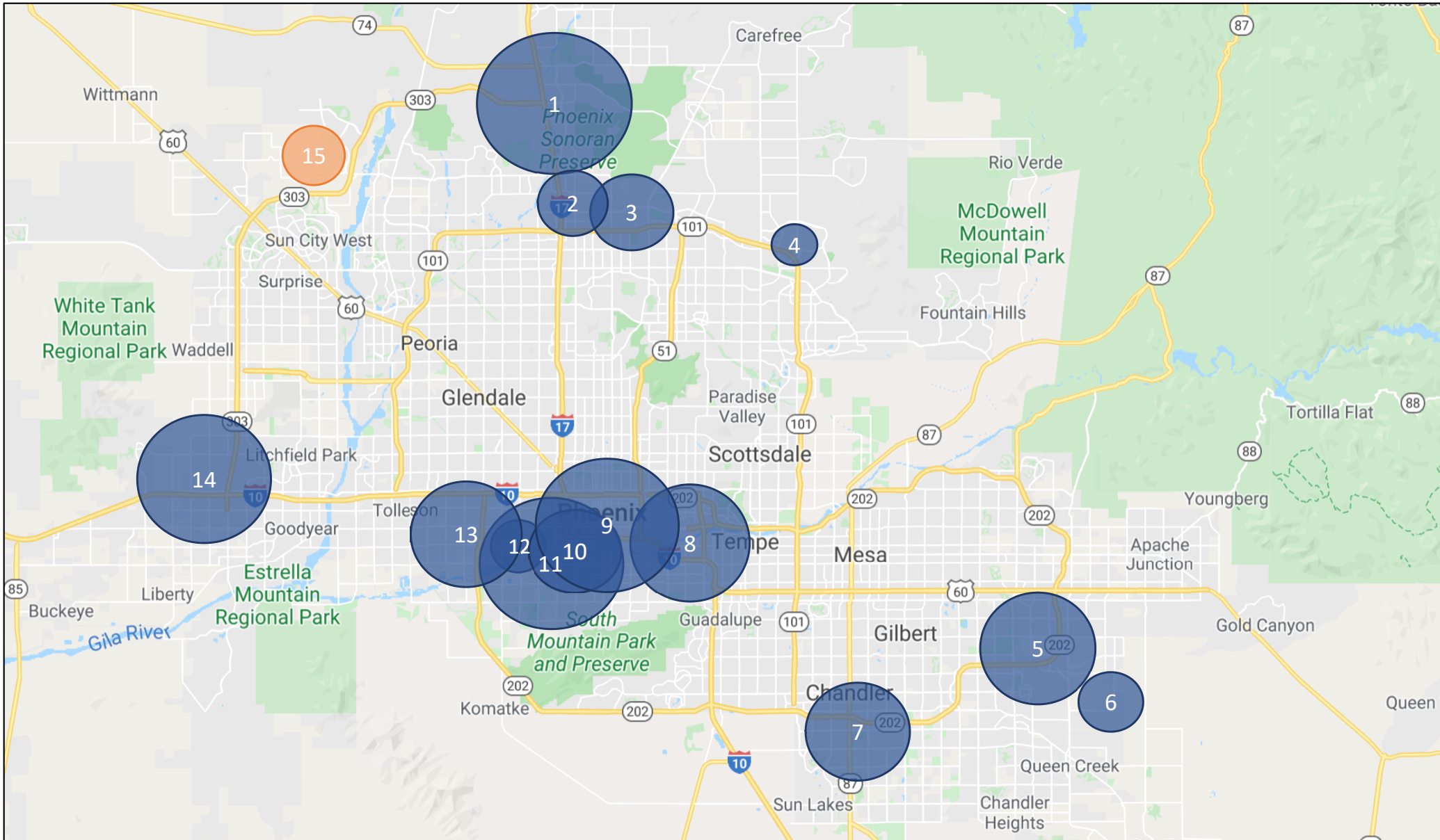
List of Commercial Scale Recycling and Transfer Stations in Maricopa County

#	Transfer Station	Operator	Distance to Nearest Residence	Approx. Acreage	Building Square Footage	Approx. Number of Bays	BOS District
9	Phoenix (7TH ST)	Republic Services	80 feet	8.7	96,420	18	5
10	RAD West Campus	Right Away Disposal LLC	2,960	5	21,525	5	5
11	Phoenix (27 th Avenue)	City of Phoenix	4,460	90	175,000	7	4
12	Weinberger	Weinberger Inc.	4,320 feet	28	14,900	10	5
13	Paradise Waste	Republic Services	3,160	15	25,700	7	5
14	White Tank Hauling	Waste Management	760 feet	18.7	49,370	1	4
15	WestWing Recycling & Transfer Facility (proposed)	Republic Services	1,900 feet	5	17,064	5	4

Exhibit 4

**Map of Commercial Scale Recycling and
Transfer Stations in Maricopa County**

Map of Commercial Scale Recycling and Transfer Stations in Maricopa County



 Comparable Facility  Proposed WestWingTransfer Station

Exhibit 5

**2001 Aerial Photo of WestWing Power
Station Area**

2001 Historical Aerial

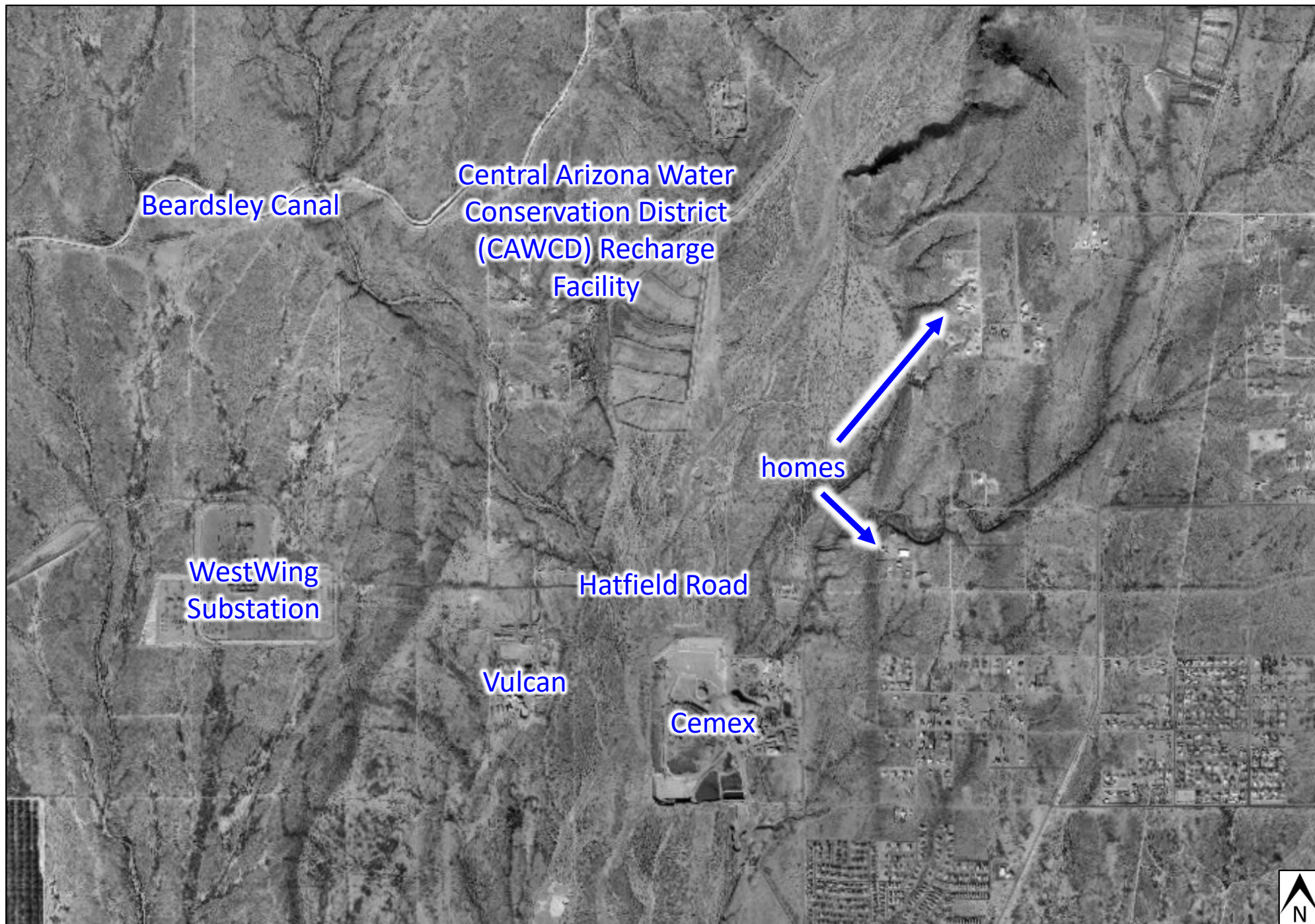


Exhibit 6
Vicinity Map

VICINITY MAP – WESTWING RECYCLING AND TRANSFER FACILITY

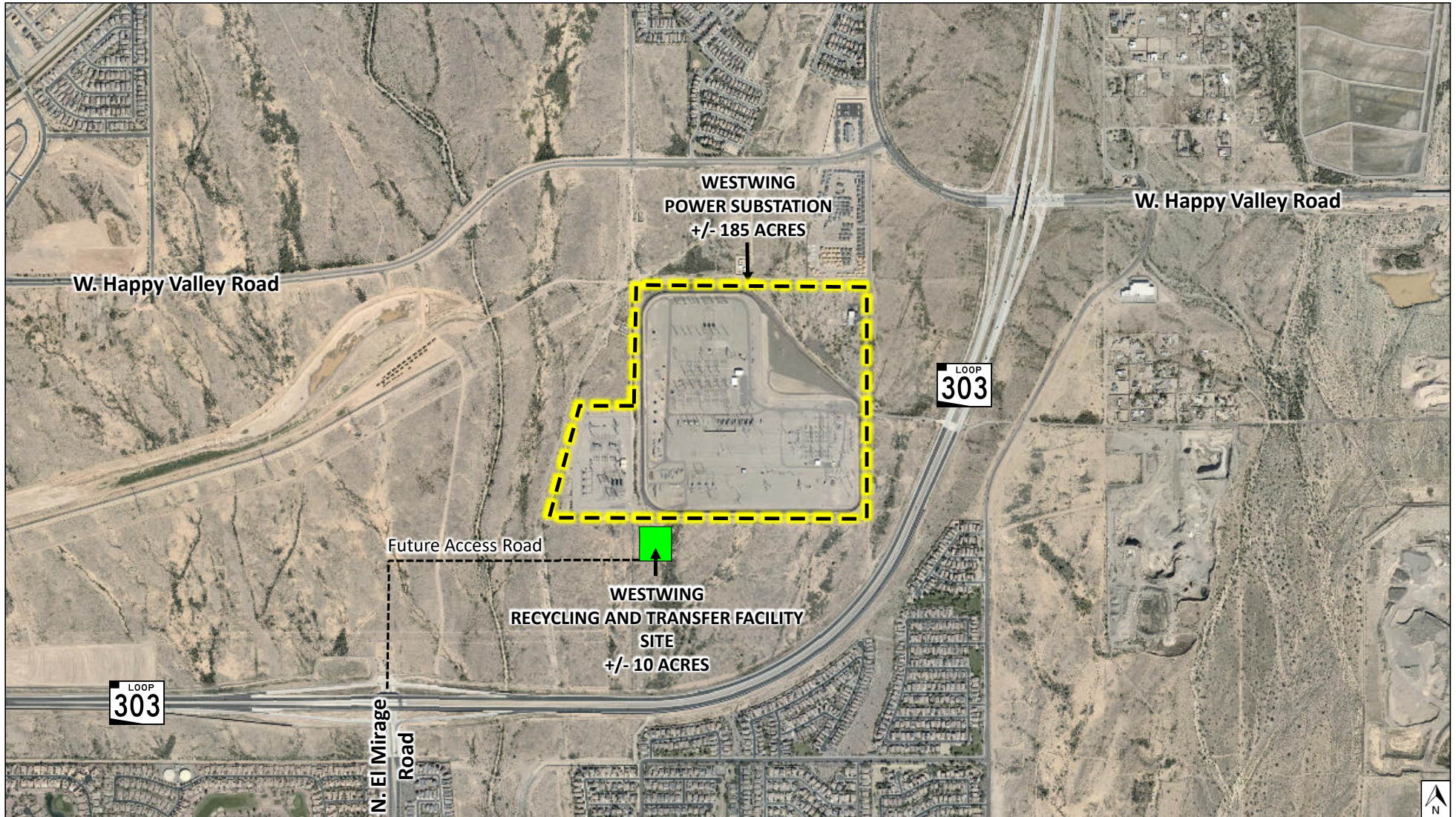
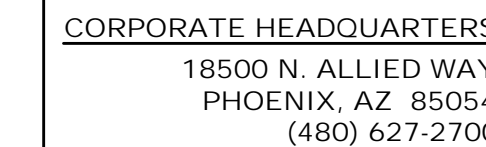


Exhibit 7
Site Plan



1000 COMMERCE PARK DRIVE
SUITE 20
WILLIAMSPORT, PA 17701
(570) 323-6600

COPYRIGHT © 2021 REPUBLIC SERVICES
ALL RIGHTS RESERVED.
THESE DRAWINGS REMAIN THE PROPERTY OF REPUBLIC
SERVICES. ANY RE-USE OF THESE DRAWINGS WITHOUT THE
EXPRESS WRITTEN CONSENT OF REPUBLIC SERVICES IS
PROHIBITED.

[illegible]

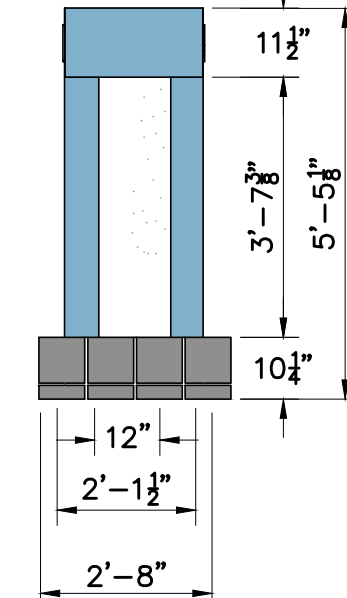
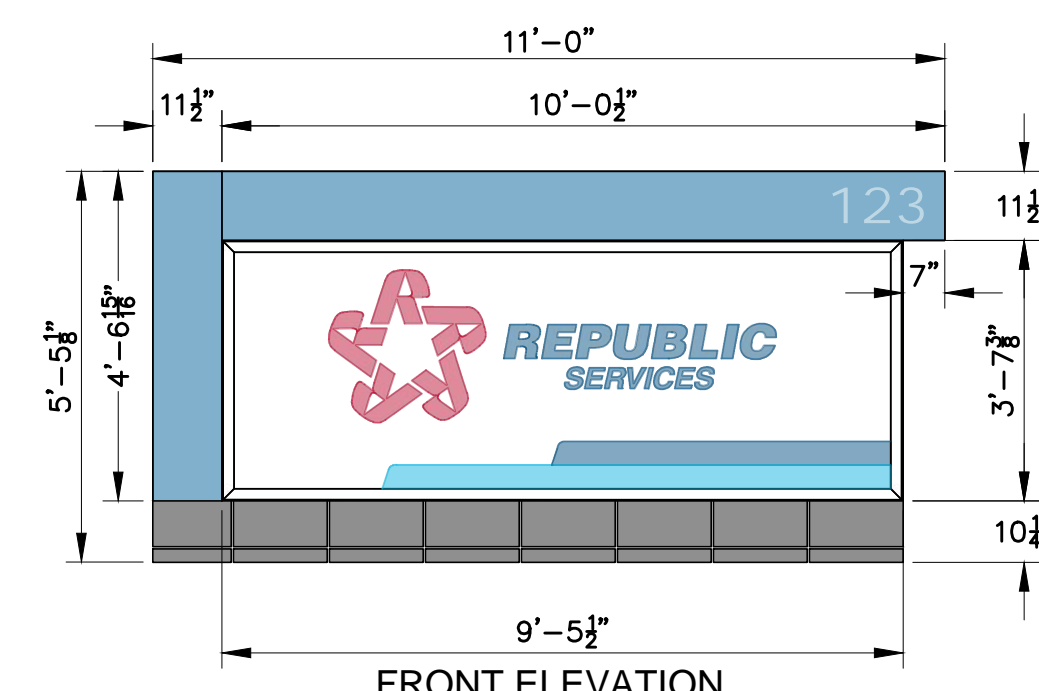
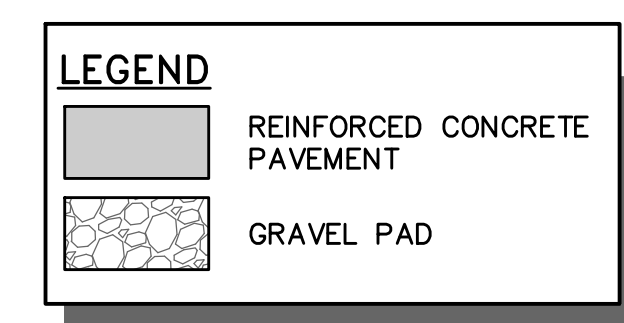
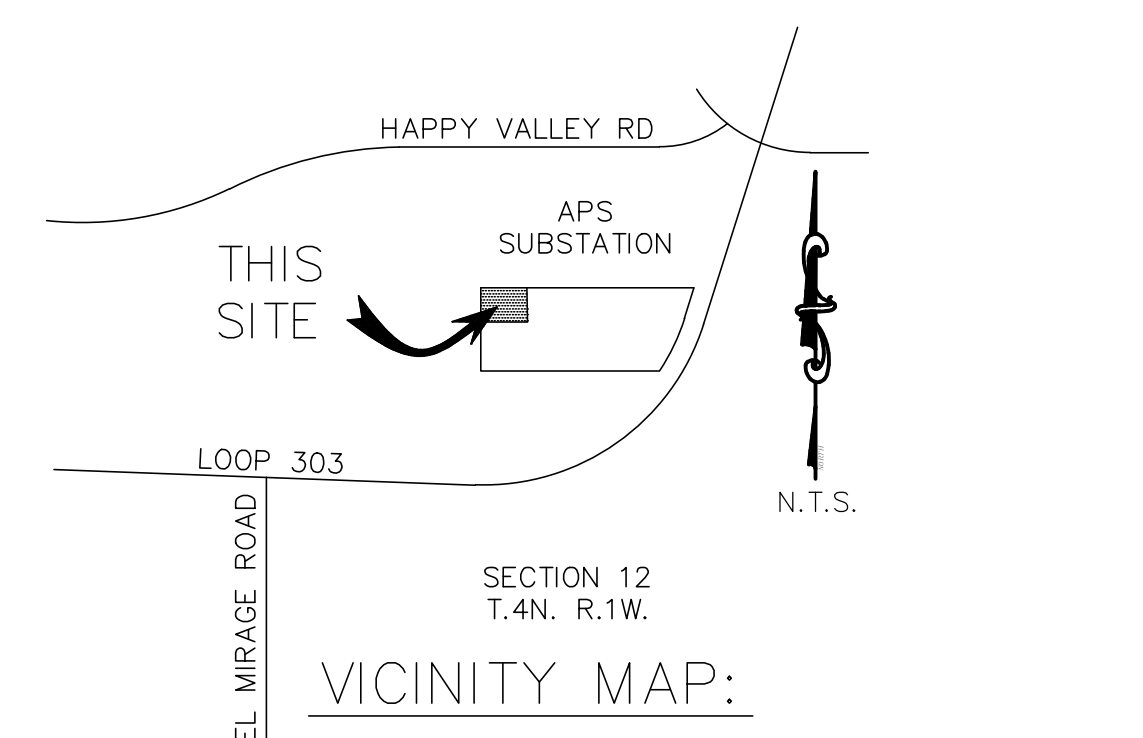
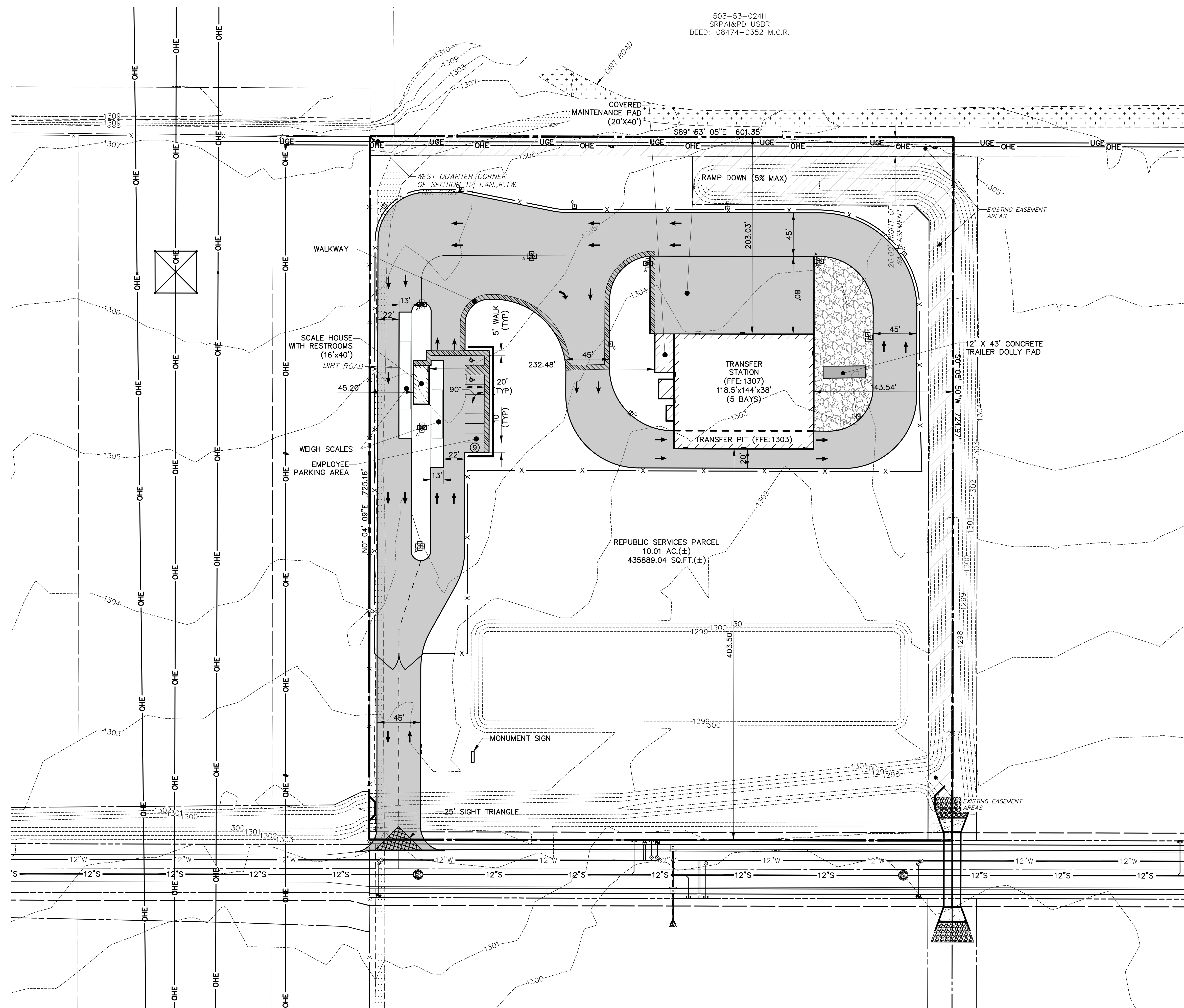
REPUBLIC SERVICES
WEST WING TRANSFER FACILITY
MARICOPA COUNTY, ARIZONA 85373

GENERAL DEVELOPMENT PLAN

DRAWN BY: SAH	APPROVED BY: CMS
PROJECT NUMBER: 12189.079	
DATE PRINTED: 02/AUG/2021	
SHEET NUMBER:	

C2

CONING SUBMISSION			
-------------------	--	--	--



NOTES:

1. SIGN TO BE PROVIDED/DESIGNED BY EVERBRITE LLC, HEADQUARTERED IN GREENFIELD, WISCONSIN.
2. REFER TO MANUFACTURER'S SPECIFICATIONS FOR MORE INFORMATION.

MONUMENT SIGN
SCALE: NOT TO SCALE

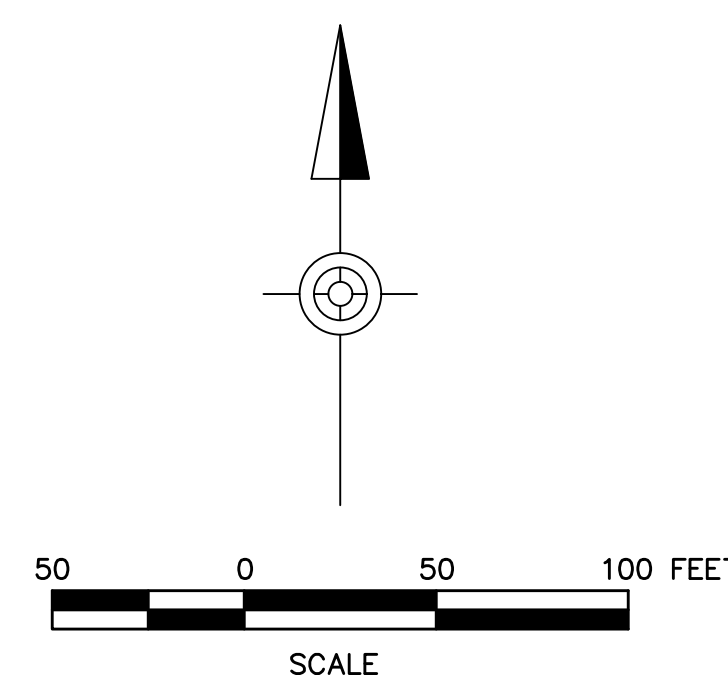


Exhibit 8
List of Recycling and Transfer Stations
By Size

List of Recycling and Transfer Stations by Size

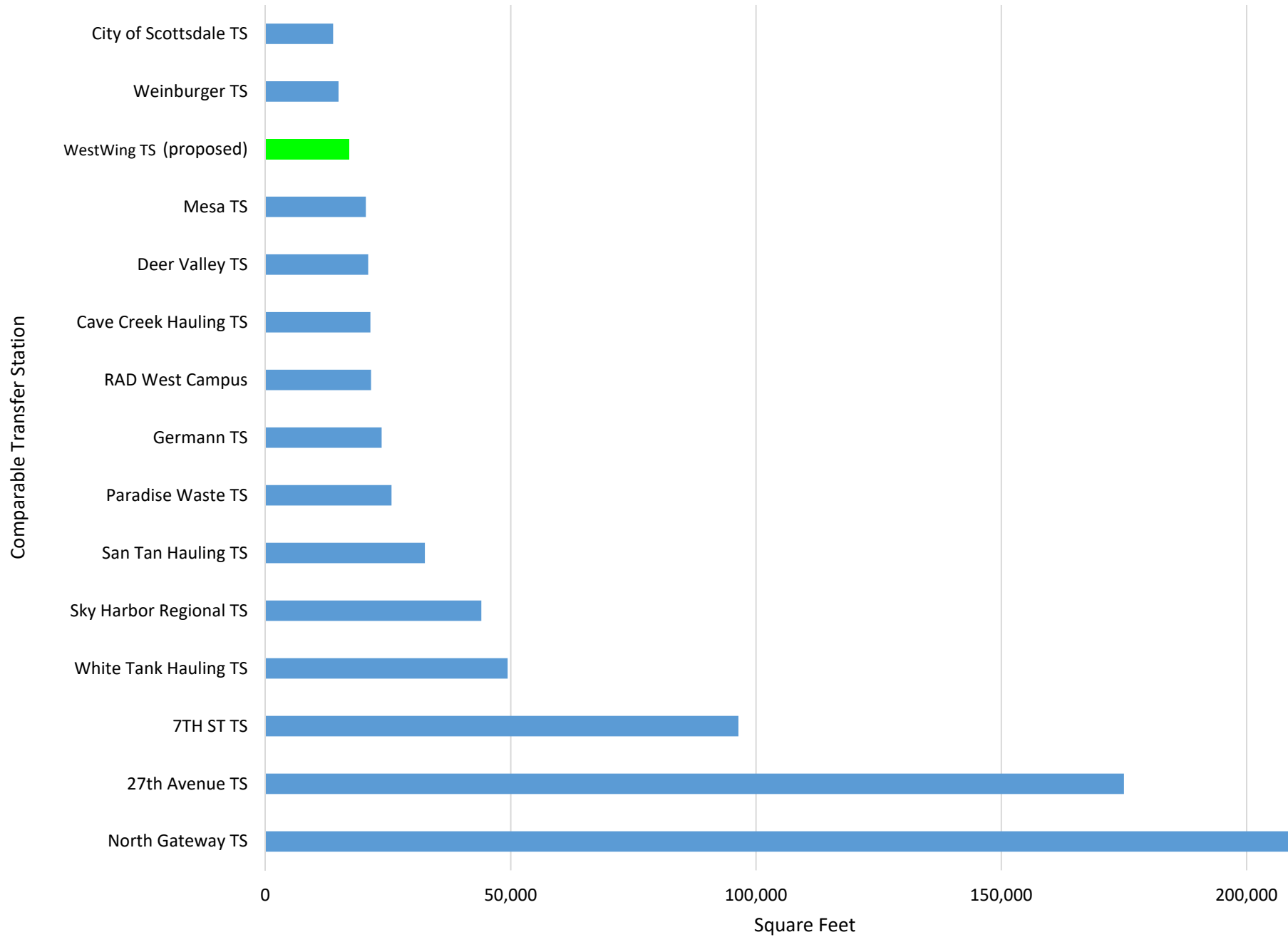


Exhibit 9

Aerial Photo of Cave Creek Transfer Station

Cave Creek Hauling Transfer Station

- Approximately 1,653 feet from nearest home/subdivision (Mountaingate)
- Approx. 12 acres
- Building square footage = Approx. 21,400

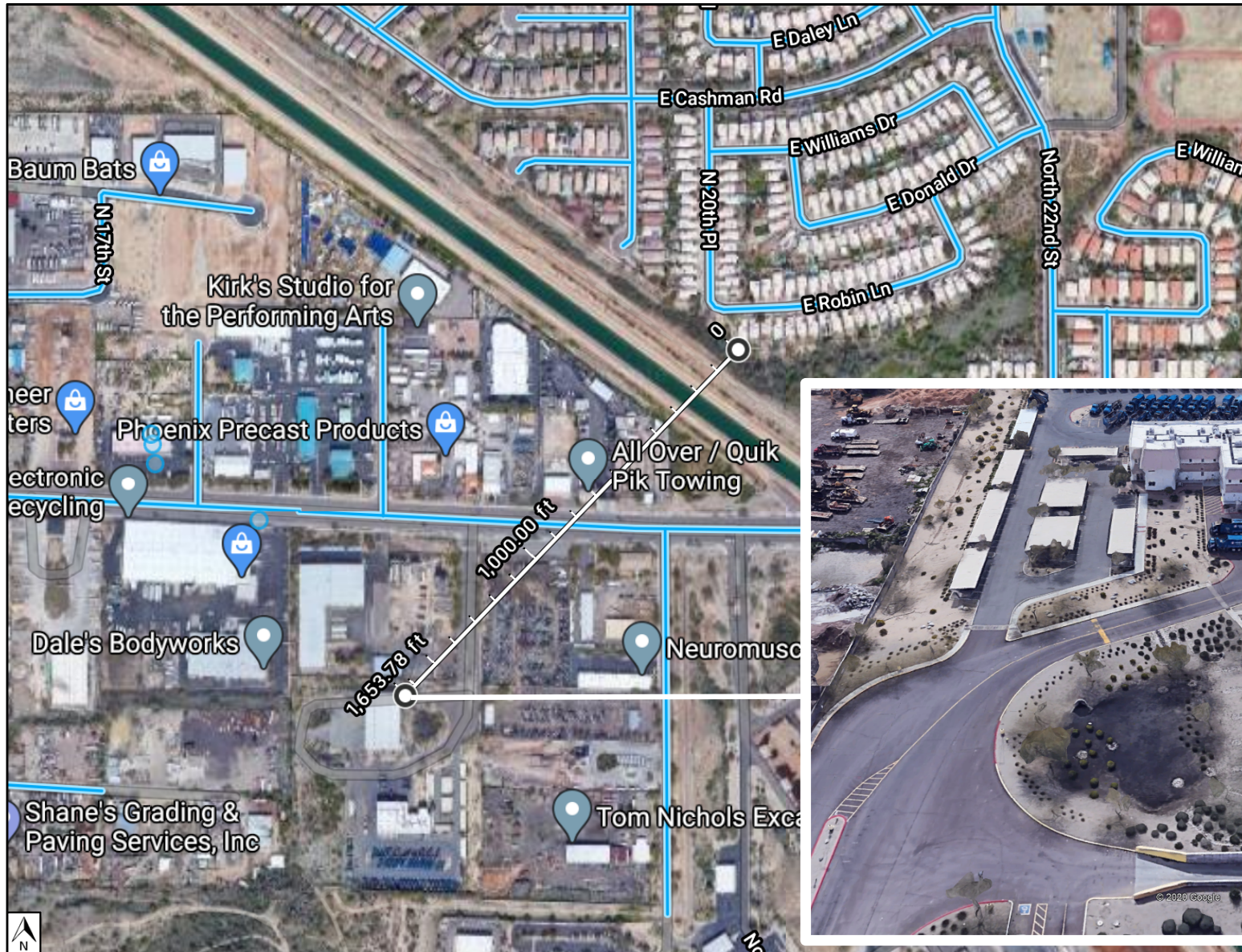


Exhibit 10

Aerial Photo of Scottsdale Transfer Station

City of Scottsdale Transfer Station

- Approximately 2,750 feet from nearest home/subdivision (Ironwood Village)
- Approx. 8.6 acres
- Building square footage = approx. 13,800

City Of Scottsdale



Exhibit 11

Aerial Photo of Mesa Transfer Station

Mesa Transfer Station

- Approximately 2,310 feet from nearest home
- Approximately 4,500 feet from nearest subdivision (Superstition View Ranchettes)
- Building square footage = Approx. 20,470
- Approx. 9 acres

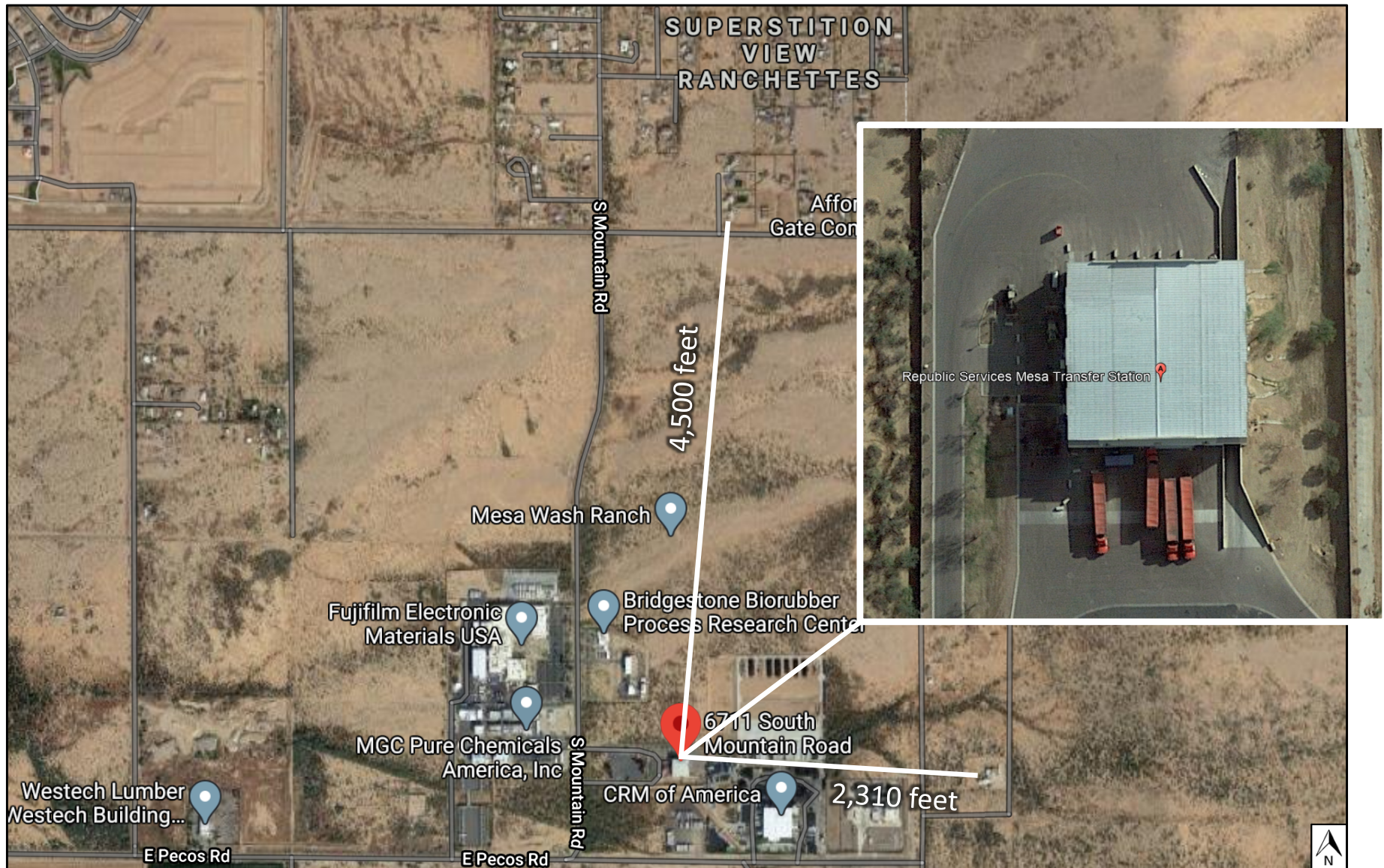


Exhibit 12
**Aerial Photo of Germann Road
Transfer Station**

Germann Transfer Station

- Approximately 2,600 feet from nearest home/subdivision (Sienna Heights) and 1,000 feet from Tumbleweed Park
- Approx. 10 acres
- Building square footage = Approx. 23,690



Exhibit 13
Site Plan,
Zoomed in on Main Features

Detailed Floor Plan

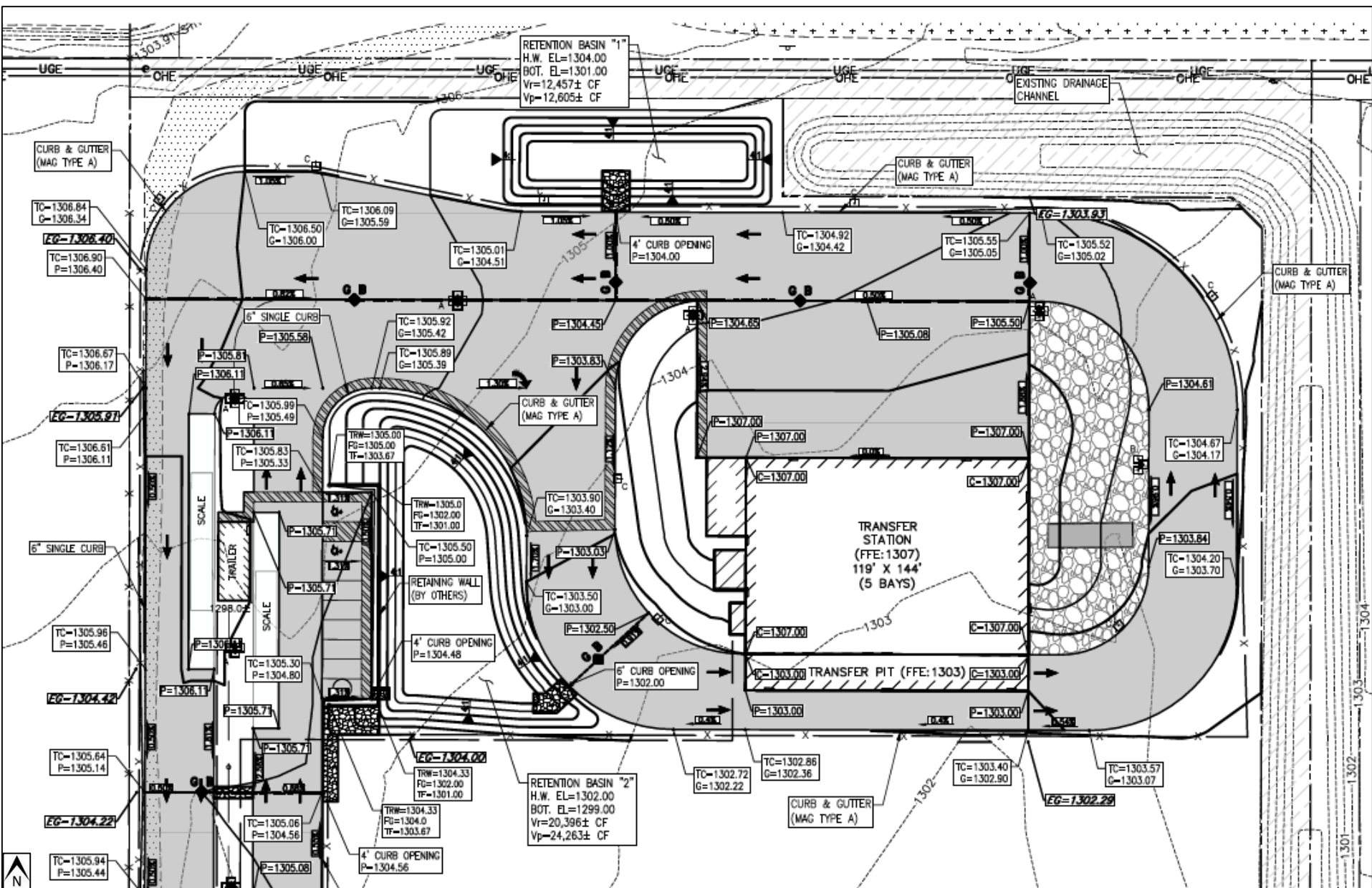
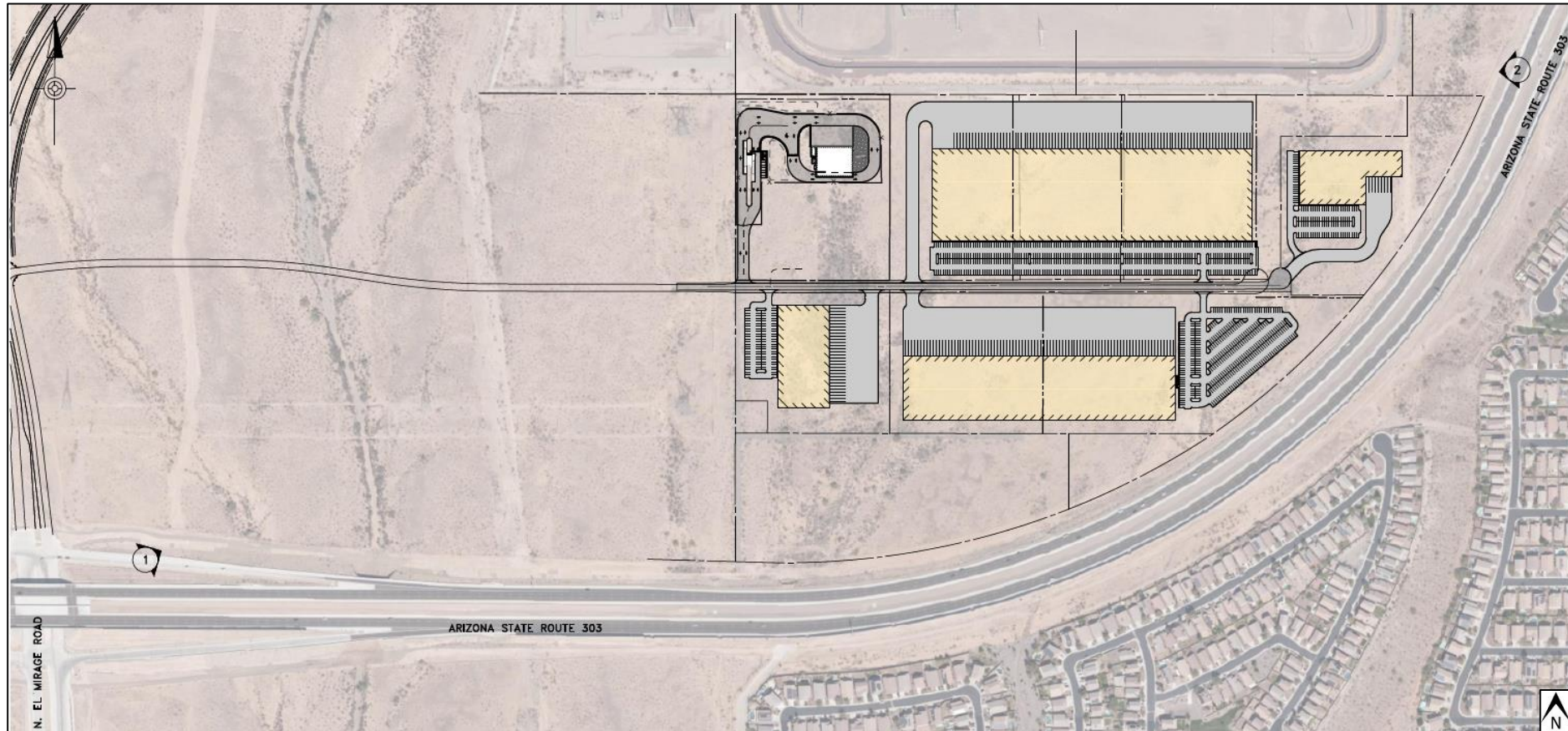


Exhibit 14
**Rendering of Fully Developed
Industrial Park**

WestWing Industrial Park Rendering – Aerial View



I-2 Zoning allows:

- Manufacturing
- Warehousing
- Truck Terminals
- Laboratories
- Sewage Treatment Plant

Exhibit 15
**Renderings of Facility
as Seen from Loop 303**

Rendering of WestWing Facility – looking north



Rendering of WestWing Facility – looking northeast



Rendering of WestWing Facility – looking west



Exhibit 16

**Chart Comparing Republic Traffic to
Existing County Approvals**

Traffic Volume Comparison to Other Uses Already Approved by Maricopa County

